



Taiwan – University of Sydney Scholarship

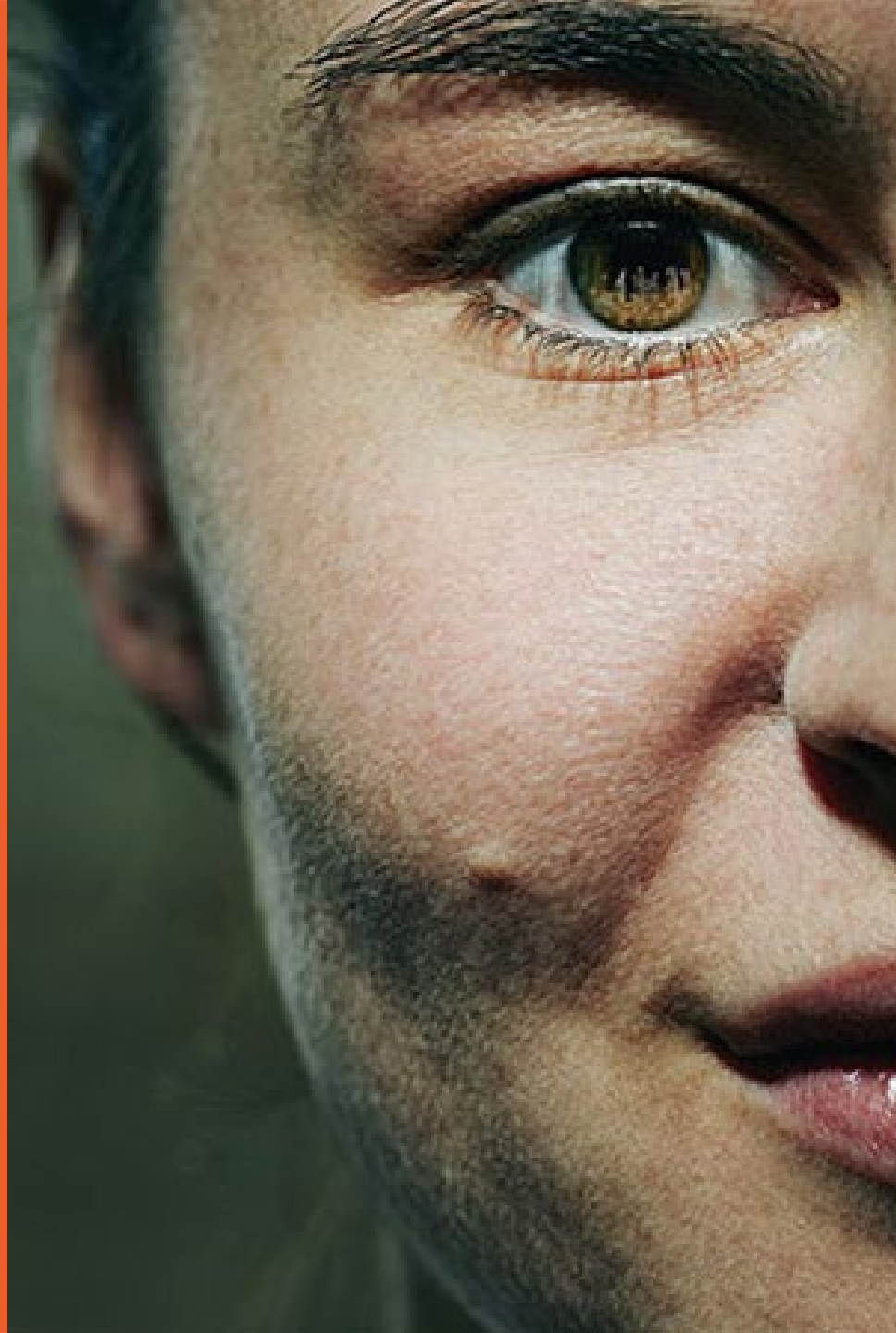
Presented by

Imogen Sheridan

HDR Recruitment Manager



THE UNIVERSITY OF
SYDNEY





Overview

- Scholarship details
- Research at Sydney
- Application process

<https://www.sydney.edu.au/scholarships/e/Taiwan-university-of-sydney-scholarship.html>

This joint scholarship supports Taiwanese students undertaking PhD studies at the University of Sydney.

- Provides a living allowance stipend of \$35,629 AUD per annum (indexed each year)
- Covers tuition fees (up to 4 years)
- Applications are now open for 2022 commencement
- Co-funded by The Department of International and Cross-Strait Education (DICE) of the Ministry of Education of the Republic of China (Taiwan) and the University of Sydney. Up to five PhD scholarships will be available each year.



THE UNIVERSITY OF
SYDNEY

Available for applicants in all university disciplines

- Arts and Socials Sciences
- Architecture, Design and Planning
- Business school
- Engineering
- Sydney Law School
- Medicine & Health
- Science
- Sydney Conservatorium of Music

Research areas: Arts and Social Sciences

Research themes

-
- | | |
|--------------------------------|-------------------------------|
| – Anthropology | – Italian Studies |
| – Arabic Language and Cultures | – Japanese Studies |
| – Archaeology | – Korean Studies |
| – Art History | – Linguistics |
| – Asian Studies | – Media and Communications |
| – Celtic Studies | – Medieval Studies |
| – Chinese Studies | – Modern Greek |
| – Classics and Ancient History | – Museum and Heritage Studies |
| – Creative Writing | – Peace and Conflict Studies |
| – Digital Cultures | – Philosophy |

-
- | | |
|--|--|
| – Economics | – Political Economy |
| – English | – Public Administration |
| – European Studies | – Sociology and Social Policy |
| – Film Studies | – South East Asian Studies |
| – French Studies | – Spanish and Latin American Studies |
| – Gender and Cultural Studies | – Studies in Religion |
| – Germanic Studies | – Theatre and Performance Studies |
| – Government and International Relations | – US Studies |
| – Graduate School of Government | – Educational History, Sociology and Philosophy |
| – Hebrew, Biblical and Jewish Studies | – Educational Systems: Administration, Management and Leadership |
| – History | |

Research areas: Architecture, Design and Planning

- Architectural design
- Architecture history and theory
- Architectural science
- Design
- Urbanism

Research areas: Business

- Accounting
- Business analytics
- Business information systems
- Business law
- Finance
- International business
- Marketing
- Strategy, innovation and entrepreneurship
- Work and organisational studies

Research areas: Engineering

- Complex systems
- Energy, resources and the environment
- Healthcare engineering
- Infrastructure and transport
- Data science and computer engineering
- Food products, process and supply chain
- Internet of Things
- Robotics and intelligent systems

Research areas: Sydney Law School

- Asian and Islamic law
- Children, youth and families
- Citizenship, migration and refugees
- Commercial and international commercial law
- Constitutional and administrative law
- Corporate, securities and finance law
- Criminal law, justice and criminology
- Environmental law and climate change
- Health law, governance and ethics
- Human rights and development
- Intellectual property, media and privacy law
- International law
- Justice, legal process and the profession
- Jurisprudence and legal theory
- Labour, employment and anti-discrimination law
- Legal history
- Private law: tort, contracts, equity and property
- Taxation

Research areas: Medicine and Health

Research into creating healthier futures spans the following key areas:

- Dentistry
- Health sciences
- Medicine
- Medical sciences
- Nursing
- Pharmacy
- Public health

Research areas: Science

- Chemistry (including medicinal chemistry)
- Geosciences (geography, geology and geophysics)
- History and philosophy of science
- Life and environmental sciences (biology, microbiology, biochemistry, nutrition, animal sciences, plant sciences)
- Mathematics and statistics
- Medical sciences (anatomy and histology, biomedical science, pathology, pharmacology, physiology)
- Physics (including astronomy and nanoscience)
- Psychology
- Veterinary Science

Research areas: Sydney Conservatorium of Music

- acoustics
- Australian Indigenous studies
- educational psychology
- electronic and score-based composition
- ethnomusicology
- historical interpretation
- intercultural studies
- music analysis
- music perception and cognition
- music learning
- music pedagogy
- music teaching
- music technology
- performance practice
- popular music studies
- psychology
- sociology of music
- Southeast Asian music
- Stylistics
- Western historical musicology.

Research with impact

We are one of the world's top research universities and a member of Australia's prestigious Group of Eight.

Times Higher Education 2021

#2 in the world for research impact

#1 in Australia for research impact

Reuters Most Innovative Universities 2018

#2 in Australia

#36 in Asia-Pacific

QS Graduate Employability Rankings 2020

#1 in Australia

#4 in the world



Research at Sydney

**100% of our
research is
ranked at world
standard or
above**



**100+ research
and teaching
centres**



How to apply



THE UNIVERSITY OF
SYDNEY



Scholarship application process

STEP 1

- Determine eligibility

STEP 2

- Develop your research ideas and secure a research supervisor at USYD

Step 3

- Submit your HDR course application to USYD

Step 4

- Submit your separate application to MoE

Determine eligibility



To be eligible for the scholarship you must:

- be a citizen of Taiwan (ROC)
- be a prospective student (not yet commenced at the University)
- have applied for admission in a PhD at the University by 30 November 2021

Determine eligibility



For all PhD applications you need to have undertaken a significant research project or thesis in your previous university-level studies.

This could be the equivalent of:

- an Australian honours degree
- a master's by research degree
- a master's by coursework with a thesis component (dissertation)

Determine eligibility



You will also need a high academic record and English language requirements

As a guide your undergraduate record will need to be:

- WAM of 75 over degree
- Honours class I WAM greater than 80
- Honours class II WAM between 75 and 80

Generally, the Doctor of Philosophy (PhD) requires **a minimum IELTS result of 6.5 overall and a result of 6 in each band**. Please check your course page for each faculty requirements.

Find a supervisor



STEP 2

When contacting a member of academic staff, its important for them to understand:

- your academic background and research experience
- the topic or area you would like to research
- why you would like them to supervise your project
- how your proposed research project aligns with their background and experience.
- ***Please also mention you are intending to apply for this scholarship***

Find a supervisor



STEP 2

Contact via:

- Directly from their academic profile email address
- 'Find a Researcher' database: Search 'Find a researcher USYD'
- Expression of Interest (Law, Business)

Include:

- **An initial research proposal (very important!)**
- CV/Resume
- Academic transcripts

Gather required documentation and submit online



STEP 3

Important to note:

- Submit your USYD application on Sydney Courses
- Apply as far in advance as possible
- You can commence studies during one of four Research Periods in the year (depending on Faculty).
- Main intake periods are March (RP2) and July (RP3)
- This scholarship will commence in RP3 July 2022

Submit on MoE Taiwan website



STEP 4

Important to note:

- Also need to submit your scholarship application via the MoE Taiwan website
- Application portal will be open 22nd of November – 16th December

Next steps:

- Start securing a supervisor at USYD
- Final scholarship results will be release 30th April 2022
- Successful students will commence from Research Period 3, 1st July 2022

Thank you

